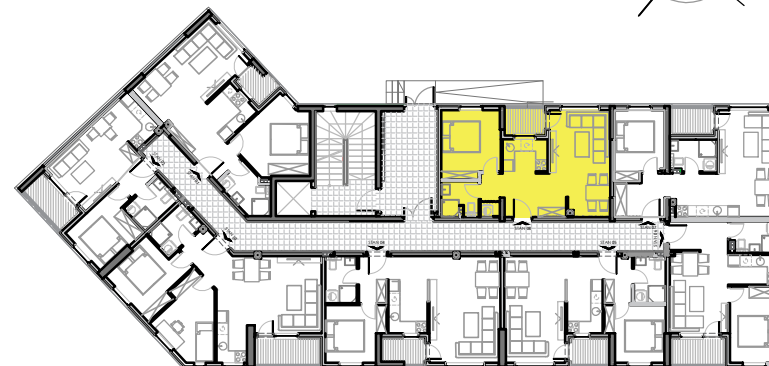


STAN 08 43,39 m<sup>2</sup>



L1	STAN_08	PRIZEMLJE	
	Naziv prostorije	Obrada poda	P/m <sup>2</sup>
1	Hodnik	keramika	3,17
2	Kupatilo	keramika	3,31
3	Soba	parket	10,18
4	Kuhinja	keramika	3,71
5	Dnevni boravak i trpezarija	parket	21,18
6	Lođa	keramika	1,84
		<b>UKUPNO: 43,39</b>	